

Louisiana Law Enforcement Accountability Database (LLEAD)

Report: Baton Rouge Police Department Use-of-Force (2025)

July 2026

Summary

This report provides an overview of use-of-force incidents reported by the Baton Rouge Police Department (BRPD) during 2025. Over this one-year period, BRPD officers were involved in 372 use-of-force incidents involving at least 393 civilians. Black residents were involved in nearly 9 of 10 force incidents (86.6% of those with known race) despite making up about 49% of the city’s driving-age population. Most civilians (92%) were not armed. Incidents peaked during late-night hours and showed seasonal variation, with the highest months in May, November, and August. Some records contain data entry errors, including 15 records with implausible ages, and 40 incidents with no address recorded.

Table of Contents

1. Executive Summary
 2. Key Findings – Distribution Analysis
 1. Incident Volume and Trends
 2. Civilian Demographics by Race
 3. Civilian Demographics by Sex & Age
 4. Armed vs. Unarmed Civilians
 5. Time-of-Day and Day-of-Week Patterns
 3. Conclusion: What the Data Suggests
 4. Methodology
 5. Data Quality & Limitations
 6. References
-

1. Executive Summary

The Baton Rouge Police Department is the primary law enforcement agency for the city of Baton Rouge, the capital of Louisiana, located within East Baton Rouge Parish. The city has a driving-age (16+) population of approximately 184,000 residents that is roughly 49% Black and 39% White, with smaller Asian, Hispanic/Latino, and multiracial populations.

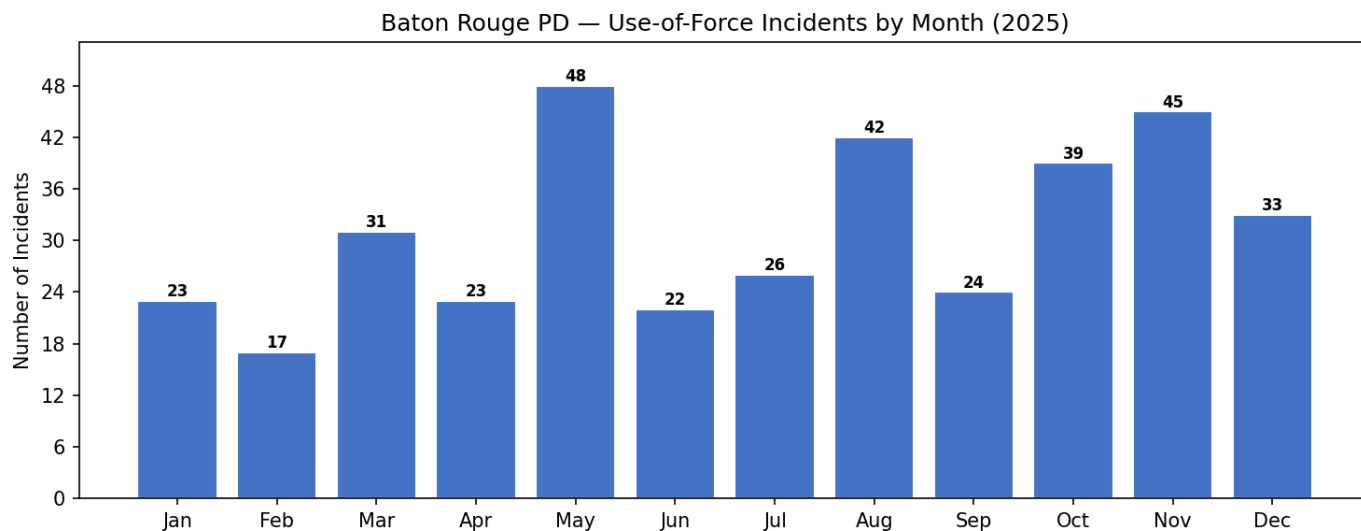
This analysis examines all use-of-force incidents, categorized by BRPD as “Response to Resistive Behavior,” reported during the 2025 calendar year. The data was obtained through public records requests to the Baton Rouge Police Department public records center.

The purpose of this report is to present a descriptive overview of the data: how many force incidents occurred, who was involved, when and where they happened, and what patterns emerge.

2. Key Findings – Distribution Analysis

2.1 Incident Volume & Trends

BRPD reported 373 unique use-of-force incidents during 2025, involving 393 civilians (some incidents involved more than one person). Monthly incident counts ranged from 17 (February) to 48 (May). The second half of the year generally saw higher counts than the first half, with notable peaks in May (48), November (45), August (42), and October (39). This chart shows the number of use-of-force incidents recorded each month during 2025. The data shows notable variation across months, with May, August, October, and November recording the highest counts.



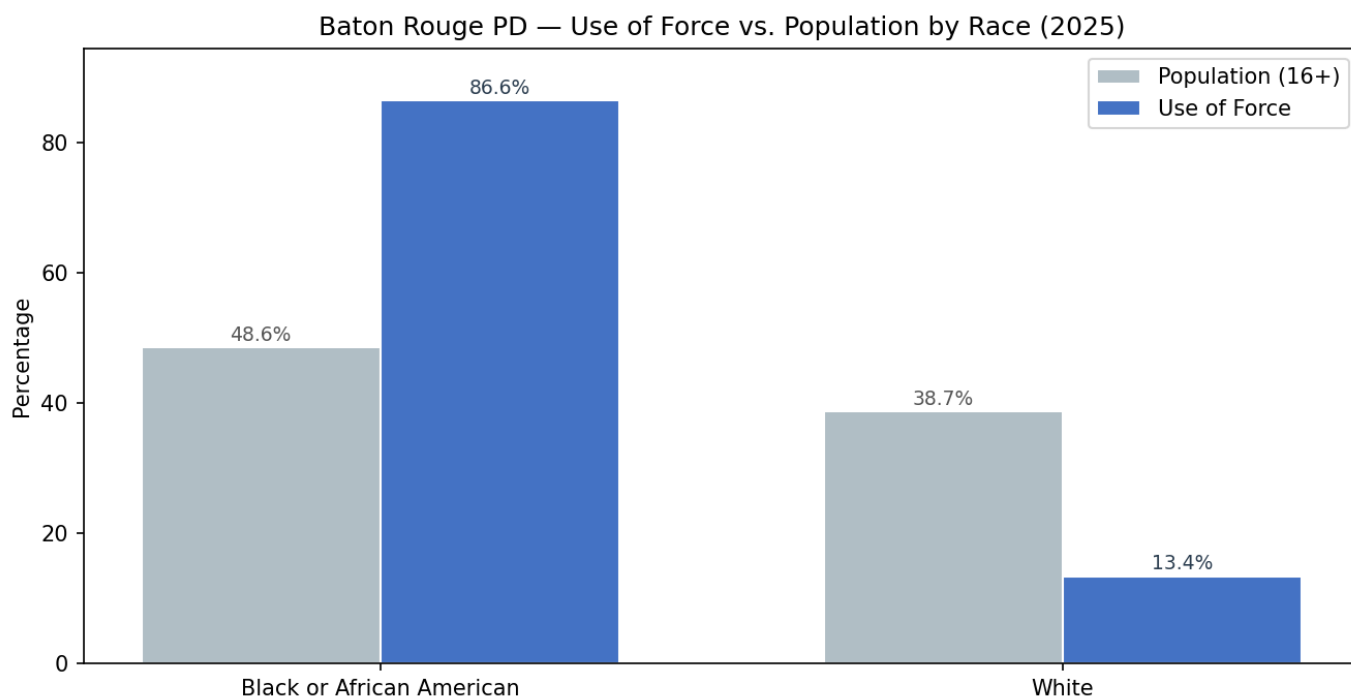
2.2 Civilian Demographics by Race

Of 393 civilian-incident records, 323 (82.2%) involved Black residents and 50 (12.7%) involved White residents. Ten civilians (2.5%) were recorded as “Unknown” race and another 10 (2.5%) had no race recorded.

A disparity ratio compares how often a group experiences force relative to its share of the population. A value of 1.0 means the group’s share of force incidents matches its population share; higher values mean the group’s share of force is above its population share, and lower values mean below.

When compared against the city’s driving-age population, the disparity is substantial. Among civilians with known race, Black residents made up 86.6% of force incidents but 48.6% of the driving-age population, a disparity ratio of 1.8. White residents made up 13.4% of force incidents despite being 38.7% of the population, a disparity ratio of 0.3. A Black resident of Baton Rouge was roughly five times more likely than a White resident to be involved in a use-of-force incident during 2025.

This chart compares each racial group’s share of use-of-force incidents (blue) against its share of the driving-age population (gray). Black residents make up 48.6% of the population but 86.6% of force incidents. White residents show the opposite pattern: 38.7% of the population but 13.4% of force incidents.



Population: City of Baton Rouge, ACS 2020–2024 5-Year, driving-age (16+). 20 records with unknown/missing race excluded from comparison.

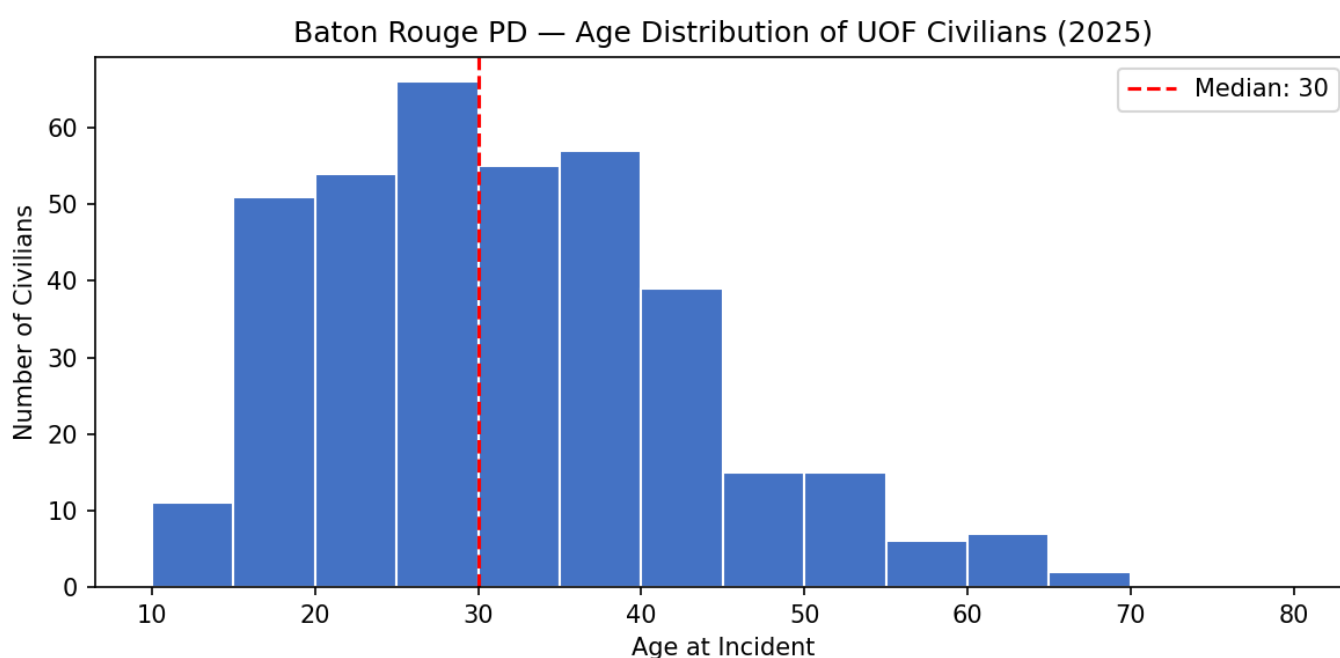
2.3 Civilian Demographics by Sex & Age

Most civilians subject to force were male: 307 (78.1%) compared to 77 females (19.6%), with 9 records (2.3%) missing sex information.

Among the 378 civilians with valid age data, the median age was 30 years old. Ages ranged from 12 to 69. The largest concentration in the 20-29 age range.

Fifteen records contain an implausible age of 125, which appears to be a default or placeholder value in the department's records system. These were excluded from the age analysis.

This chart shows the age distribution of civilians involved in use-of-force incidents. The distribution peaks in the mid-20s with the dashed red line marking the median age of 30.



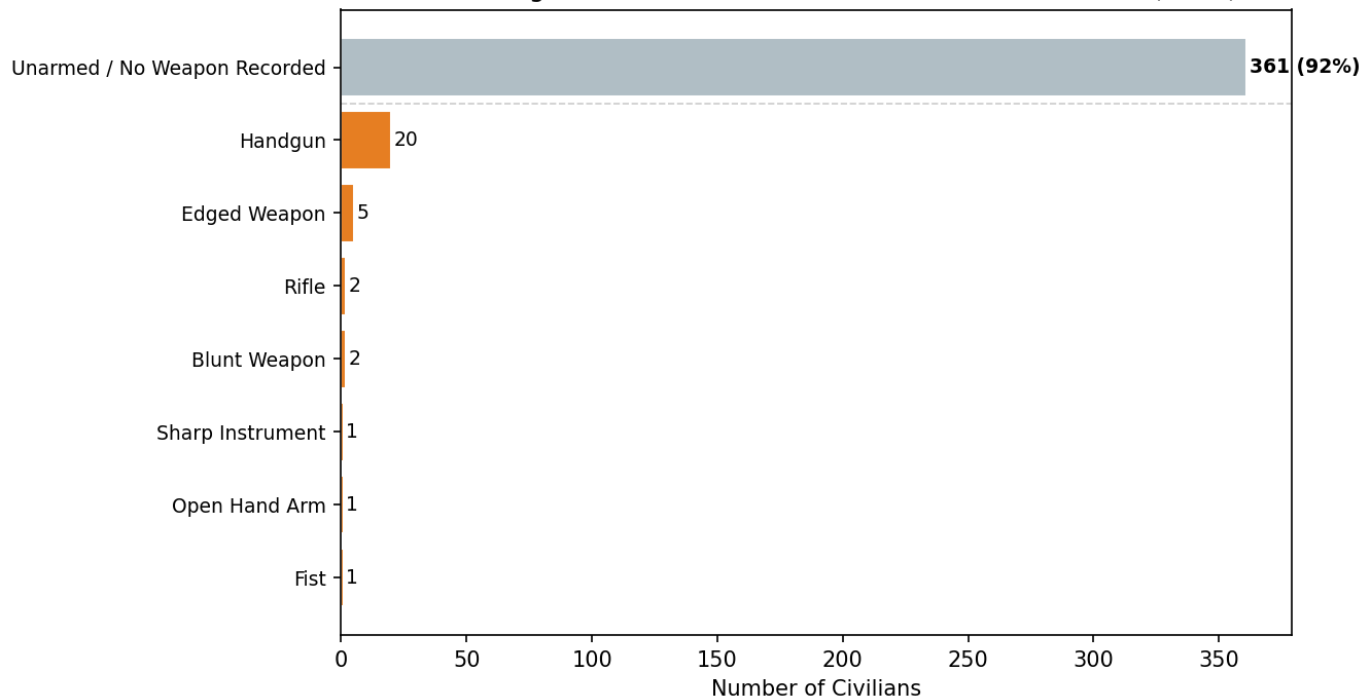
2.4 Armed vs. Unarmed Civilians

Of the 393 civilian-incident records, 361 (91.9%) involved civilians who were either unarmed or had no weapon recorded. Only 32 (8.1%) involved civilians with a weapon.

Among armed civilians, handguns were the most common weapon (20 instances), followed by edged weapons (5), rifles (2), and blunt weapons (2).

This chart shows the armed status of all 393 civilians involved in use-of-force incidents. The top bar represents the 361 civilians (92%) who were unarmed or had no weapon recorded. Below the dashed line, the chart breaks down weapon types among the 32 armed civilians.

Baton Rouge PD — Civilian Armed Status in UOF Incidents (2025)

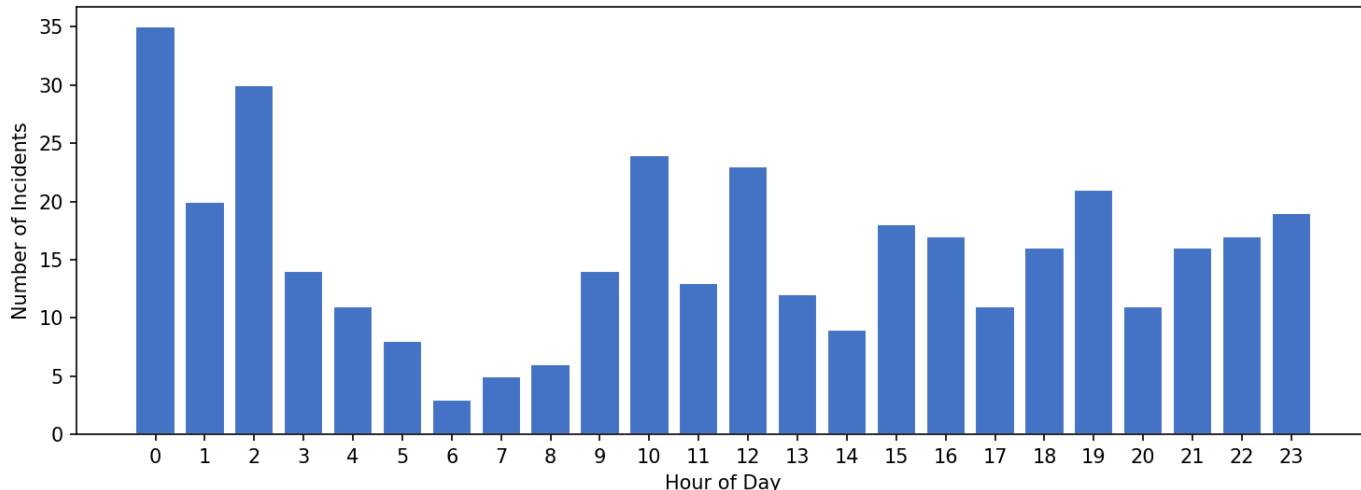


2.5 Time-of-Day and Day-of-Week Patterns

Use-of-force most commonly occurred during late-night hours, with midnight (35 incidents) and 2 AM (30 incidents) recording the most. A secondary daytime peak occurs around 10 AM (24 incidents) and noon (23 incidents). The quietest period runs from 5 AM to 8 AM.

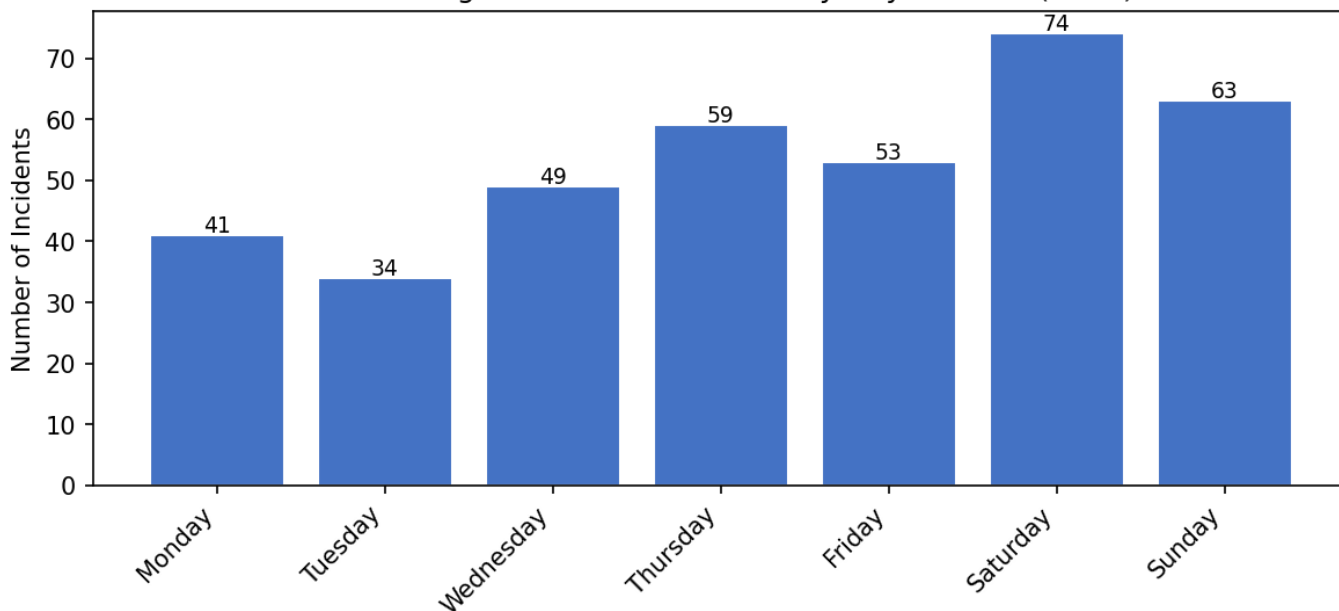
This chart shows use-of-force incidents by hour of day. Two peaks are visible: a late-night cluster from midnight through 2 AM, and a daytime cluster around 10 AM and noon.

Baton Rouge PD — UOF Incidents by Hour of Day (2025)



This chart shows use-of-force incidents by day of week. Saturday (74 incidents) and Sunday (63 incidents) had the highest concentration of force incidents.

Baton Rouge PD — UOF Incidents by Day of Week (2025)



3. Conclusion: What the Data Suggests

A few patterns emerge from this analysis of Baton Rouge Police Department's use of force data for 2025.

Black residents experience force far more than their share of the population would predict. Black residents make up 48.6% of the city's population yet are subject of 86.6% force incidents. A Black resident was roughly five times more likely than a White resident to be involved in a force incident. This disparity does not by itself establish the cause, but its size calls for deeper examination.

The overwhelming majority of force is used against unarmed civilians. More than 9 in 10 civilians had no weapon recorded. 32 of 393 civilians were armed. Handguns accounted for most weapons when present.

Force incidents most commonly took place during late-night hours and around midday.

The data has meaningful limitations. This analysis covers a single year and a single dataset with limited fields. There is no information about the officer involved, type of force used, whether an arrest was made, or whether the civilian or officer was injured. Fifteen records contain a placeholder age of 125, 20 records are missing race data, and 40 are missing addresses. These gaps do not undermine the overall patterns but do limit the precision of certain analyses.

4. Methodology

1. Data Sources: One CSV file obtained via public records request from the Baton Rouge Police Department, covering "Response to Resistance Behavior" incidents from January 1, 2025 through December 31, 2025 (398 rows, 393 after deduplication within events). Fields include: event number, date/time, address, civilian name, date of birth, age at incident, race, sex, armed with, and a person number.

2. Population Data: City of Baton Rouge demographics from the U.S. Census Bureau American Community Survey, 2020-2024 5-Year Estimates (tables B01001, B01001A, B01001B; place FIPS 22-05000). Driving-age population (16+) was calculated by summing age groups 15-17 and above from race-specific tables. Census data was retrieved programmatically via the Census Bureau API. The city-level geography was used because BRPD's jurisdiction covers the City of Baton Rouge, not the full parish.

3. Data Cleaning: The source file contained two trailing rows (an empty row and a filter description row) which were removed. Fifteen records with an age of 125 were excluded from age analysis but retained for other analyses.

4. Deduplication: Civilian records were deduplicated to one row per person per incident for demographic counts. Five duplicate event-person combinations were identified and removed. For population-normalized race comparisons, 20 records with unknown or missing race were excluded from the denominator.

5. Data Limitations

- Implausible ages: 15 civilians have an age of 125, which appears to be a system default or placeholder value rather than a data entry error.
 - Missing race: 10 records have no race recorded and 10 are coded as “Unknown,” totaling 20 records (5.1%) excluded from analyses by race.
 - Missing sex: 9 records have no sex recorded.
 - No arrest or injury data: Unlike some other agency datasets, the BRPD data does not include whether an arrest was made or whether the civilian or officer was injured.
 - No force type: The data does not include what type of force was used (i.e.. Taser, takedown, firearm, OC spray).
 - No officer information: The data does not identify which officers were involved in each incident.
-

6. References

1. U.S. Census Bureau. American Community Survey, 2020-2024 5-Year Estimates, Tables B01001, B01001A, B01001B. City of Baton Rouge, LA (Place FIPS 22-05000). Accessed June 2026.
2. Baton Rouge Police Department. Response to Resistive Behavior Records/Use of Force Incident Data, January-December 2025. Obtained via public records request.